

**ECLIPS**  
inventive engineering



## Container Roll-Out Solar System (CROSS)

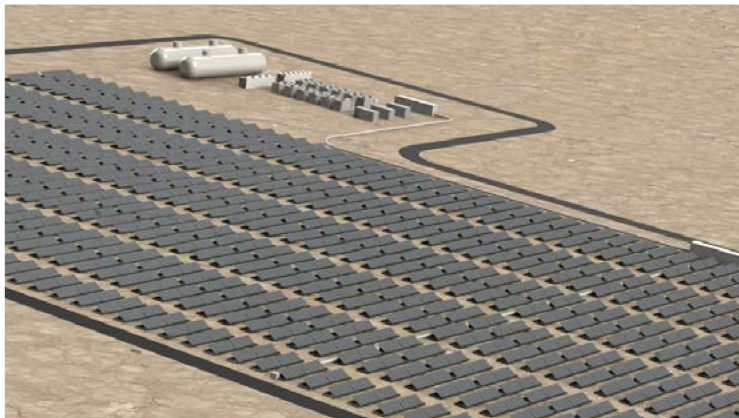


### PRODUCT FEATURES AND BENEFITS

- > CROSS is a factory assembled, relocatable solar power array providing up to 2175 W of power per 20 ft unit (CROSS20) and 4350 W of power per 40 ft unit (CROSS40).
- > CROSS is delivered fully assembled and can be rolled out of a shipping container and setup in minutes. The PV array is spring assisted, meaning no special tools are required during setup.
- > CROSS are inter-connectable with corner twistlocks and can be stacked up to seven high in an ISO shipping container during transportation or storage. CROSS is a modular solution suitable for projects up to utility scale and can be deployed without any ground penetration for anchoring.
- > CROSS include heavy duty rollers on one end enabling them to be rolled in or out of shipping containers for quick and easy deployment.
- > The PV array can be setup at 0°, 10°, 20° and 30° angles. Additional angles can be requested when ordered.
- > CROSS comes pre-wired to a DC isolator and ready for connection to an inverter.
- > CROSS is structurally certified for installation in AS/NZS 1170.2:2011 Wind Regions A to D.

Container Roll-Out Solar System (CROSS)

ECLP-101723\_v1-2





**ECLIPS**  
inventive engineering



## Container Roll-Out Solar System (CROSS)

Container Roll-Out Solar System (CROSS)

### CROSS20 SPECIFICATIONS

Dimensions folded (Transport Mode)	Length	Width	Height
mm	5825	2296	310
ft in	19' 1 3/8"	7' 6 3/8"	1' 0 1/4"

Dimensions deployed with panels at 30°	Length	Width	Height
mm	5825	2296	1335
ft in	19' 1 3/8"	7' 6 3/8"	4' 4 1/2"

CROSS20	SPECIFICATION
Nominal Power P <sub>Max</sub>	2175 W
Number of PV Modules	5
Maximum PV Module dimensions	2067 mm x 1046 mm
Cables	PVIF rated, 4.0 mm <sup>2</sup>
Connectors	MC4
Gross Mass	1350 kg
Complies with	AS/NZS 1170.2 AS/NZS 5033 AS/NZS 3000 AS 4100



### CROSS40 SPECIFICATIONS

Dimensions folded (Transport Mode)	Length	Width	Height
mm	11,924	2296	310
ft in	39' 1 1/2"	7' 6 3/8"	1' 0 1/4"

Dimensions deployed with panels at 30°	Length	Width	Height
mm	11,924	2296	1335
ft in	39' 1 1/2"	7' 6 3/8"	4' 4 1/2"

CROSS40	SPECIFICATION
Nominal Power P <sub>Max</sub>	4350 W
Number of PV Modules	10
Maximum PV Module dimensions	2067 mm x 1046 mm
Cables	PVIF rated, 4.0 mm <sup>2</sup>
Connectors	MC4
Gross Mass	2350 kg
Complies with	AS/NZS 1170.2 AS/NZS 5033 AS/NZS 3000 AS 4100



ALL DIMENSIONS AND WEIGHTS ARE NOMINAL AND SUBJECT TO MINOR VARIATIONS THAT MAY OCCUR DURING THE MANUFACTURING PROCESS

